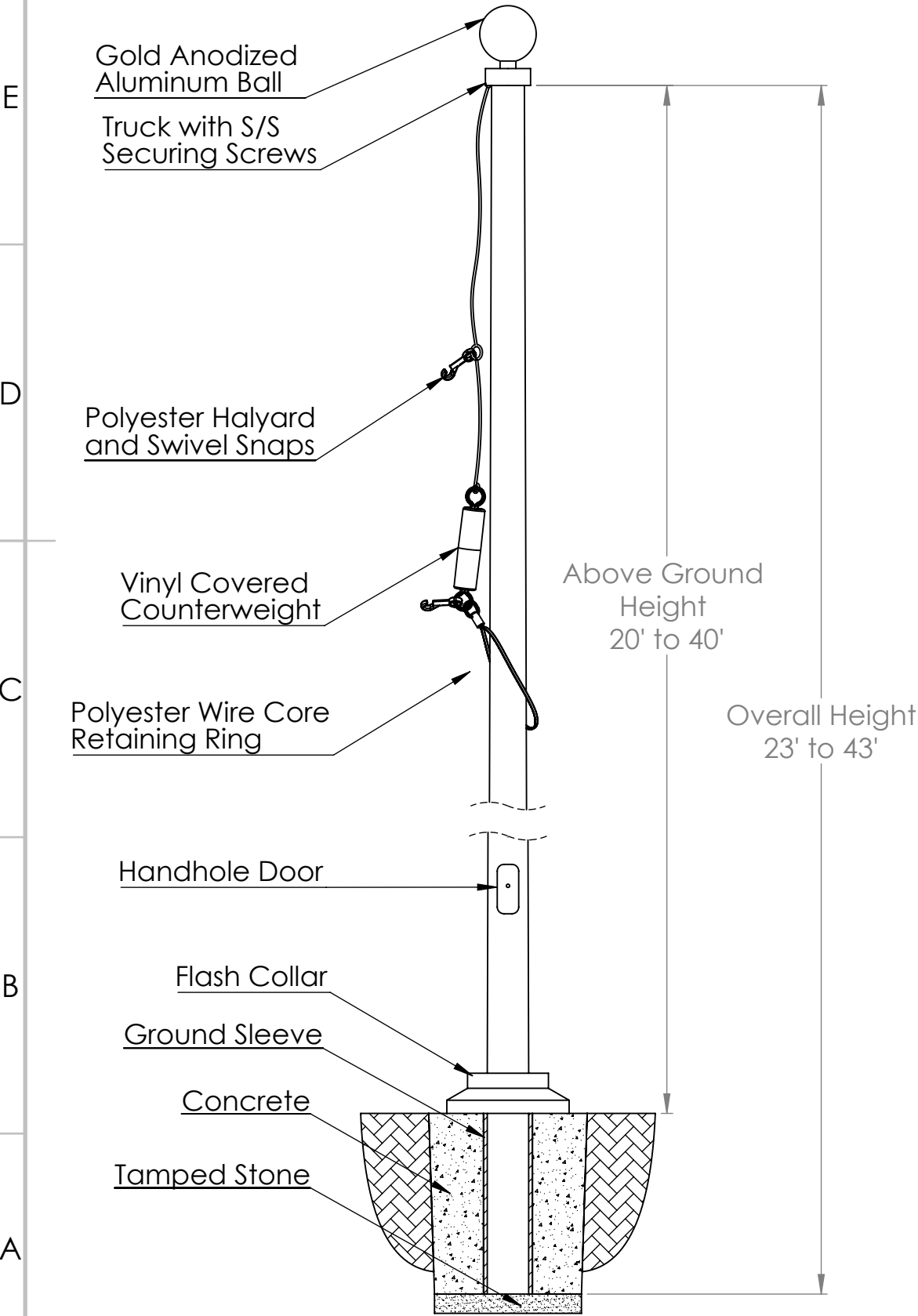
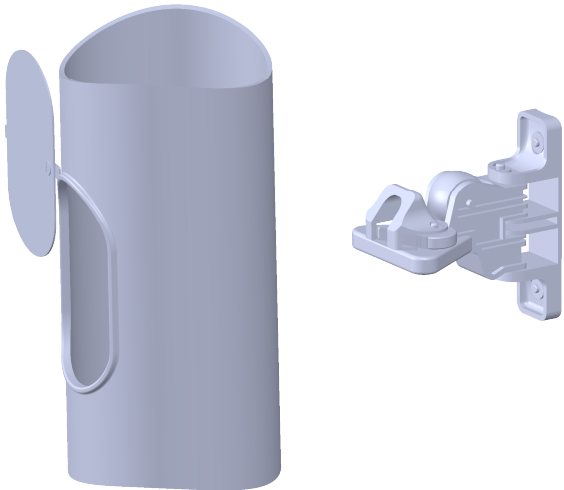


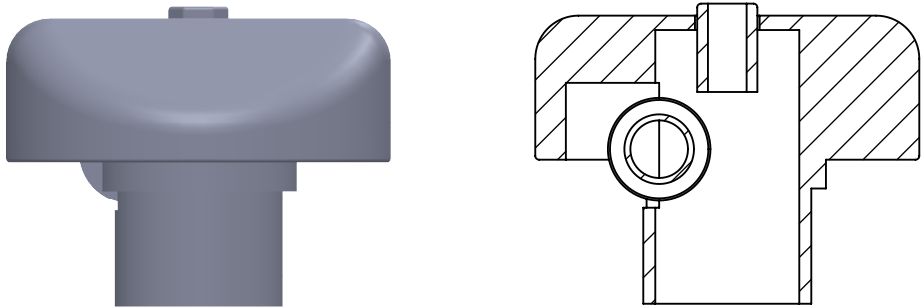
Aeolus Series
Internal Ground Set
20I-40I



Internal Cam Cleat
and Hand Hole Door



Fiberglass Internal
Stationary Truck



Specifications and Accessories

Model	20I	25I	30I	35I	40I
Above Ground Height	20'	25'	30'	35'	39'
Overall Height	23'	28'	33'	39'	43'
Butt Diameter	5.75"	6"	6.75"	7"	7"
Top Diameter	3"	3"	3"	3"	3"
Pole Weight (lbs)	36	59	77	115	137
Shipping Weight (lbs)	105	113	151	197	219
Ground Sleeve I.D.	8"	8"	8"	8"	8"
Ground Sleeve Length	3'	3'	3'	4'	4'
Ball Diameter	6"	6"	6"	8"	8"
Halyard	#10	#10	#10	#10	#10
Flash Collar	16"	16"	16"	16"	16"
Truck	F/G	F/G	F/G	F/G	F/G
Snaps	Brass	Brass	Brass	Brass	Brass
Standard Flag Size	4'X6'	4'X6'	5'X8'	5'X8'	6'X10'

Specifications

Provide a Fiberglass Reinforced Composite (FRC) Ground set flagpole Model # **25I** as manufactured by PLP Composites, Fitzwilliam, NH 03447.

The flagpole shall have a mounting height of 25' and 3' below grade for an overall length of 28'.

The butt diameter shall be 6" and the top diameter 3". The pole weight shall be approximately 59 lbs. and a total shipping weight of 113 lbs.

The flagpole shall be manufactured of fiberglass woven roving and polyester resin with 75% of the reinforcing fibers oriented in the axial plane for maximum stiffness and 25% in the radial plane for required hoop strength. Load calculations shall be based on AASHTO and NAAMM standards with the pole designed with a two to one (2:1) safety factor for 125 mph winds, unflagged, with a 1.3 gust factor.

The flagpole shall have an Entasis taper and shall be void of vertical mold seams.

The flagpole shall be sanded smooth and coated with a high gloss Aliphatic Polyurea coating system which provides extended UV protection and weatherability.

Internal pole is equipped with a cam cleat, door with security screw, tab, & lock nut at the time of internalizing, prior to shipment.

Standard colors include: White, Black, Bronze, Faux-Luminum, and Metallic Bronze



PLP Composites

57 Creamery Road - PO Box 429, Fitzwilliam, NH 03447 - Phone: 800-262-6075 - www.plpcomp.com or www.zeusflagpoles.com - info@plpcomp.com

Aeolus Series - Model #25I	Standard Fittings:		Project:
25' Above Grade Height	6" Gold Anodized Ball	50' of #10 Polyester Halyard	
28' Overall Height	Cast FG Stationary Truck	16" Flash Collar	Location:
Top Diameter - 3"	1 pair of Brass Snaps	Small Retaining Ring	
Butt Diameter - 6"	1 pair of Vinyl Covers	Small Counterweight	Date:
	Security Driver	3'x8" Ground Sleeve	